



福容大飯店
Fullon Hotel Tamsui
Fisherman's Wharf
淡水漁人碼頭

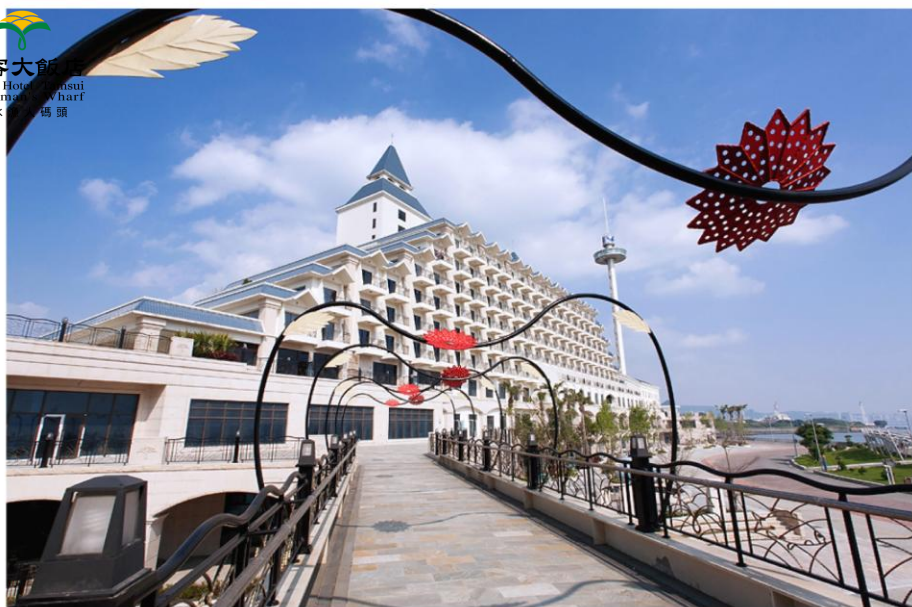


淡江大學 管理科學學系
Tamkang University Department of Management Sciences

FULLON HOTEL TAMSUI FISHERMAN' S WHARF

A vacation paradise right by the city, embracing world-class luxuriously spectacular Tamsui is located just 30 minutes by car from Taipei City downtown and can also be easily reached by MRT Tamsui Line; transit via Danhai Light Rail or Blue Highway (ferry), and it will take only 10 minutes before arriving at Tamsui Fisherman' s Wharf scenic area. Within the area, there is breathtaking world-class sunset, the most beautiful hotel in Northern Taiwan in a unique cruise ship style, as well as New Taipei City's landmark "100m-high revolving Lover' s Tower" – they are all must-visitsites for international and domestic travelers alike! At the Hotel, the picturesque sceneries of the mountains and the ocean are integrated with humanities, culture, and art. It offers 198 comfortable guestrooms and comprehensive facilities: precious hot spring from Datun Mountain, sauna, ocean-view gym, aromatherapeutic spa, rooftop outdoor swimming pool, children' s play area, VR playroom, and children' s car racing room; diverse dining services: buffet at Arcadia Café, Chef A-Chi Dimsum Restaurant, Lobby Café, and E2 Bar. The Hotel has been recognized by awards given in Taiwan and around the world, and it is also 5-Star Hotel. Outstanding service quality, reasonable and friendly prices have made the Hotel widely loved by many since its inception.





正本

檔號 (12)福漁字第 號
保存年限 2013 08 25 001
收件日期: 112年8月23日

交通部觀光局 函

地址: 106433 臺北市忠孝東路4段290號9樓
聯絡人: 楊小姐
聯絡電話: 02-23491500 分機: 8519
傳真: 02-27739297

251

新北市淡水區觀海路83號

受文者: 福容大飯店股份有限公司(福容大飯店淡水漁人碼頭)

發文日期: 中華民國112年8月23日

發文字號: 觀宿字第1120600843號

類別: 普通件

密等及解密條件或保密期限:

附件: 如說明三請至附件下載區(<https://documentap.throc.gov.tw>)以文號: 1120600843及
認證碼: 8826BB6F25下載附件檔案

主旨: 貴公司為所屬「福容大飯店 淡水漁人碼頭」申請參加星級
旅館評鑑, 經評鑑結果為五星級, 請查照。

說明:

- 一、依貴公司112年3月31日星級旅館評鑑申請書辦理。
- 二、本案經評鑑結果為751分, 依據「星級旅館評鑑作業要點」
第5、9點規定, 751分以上至850分者, 核給五星級; 星級旅
館評鑑標識效期至115年8月31日止。
- 三、貴公司請於通知日起15日內, 向本局提出星級旅館評鑑標識
申請, 本局於收件後45日內核發, 檢附「交通部觀光局星級
旅館評鑑標識及得分申請書」1份。

正本: 福容大飯店股份有限公司(福容大飯店淡水漁人碼頭)

副本: 社團法人台灣評鑑協會

代理局長 周廷彰

福容大飯店 淡水漁人
碼頭

交觀業字第1350號

📍 新北市淡水區觀海路83號



餐廳 會議場所 咖啡廳

酒吧 宴會廳 健身房

商店 游泳池 有線網路

無線網路 三溫暖

國民旅遊卡 停車場

溫泉設施 無障礙客房

自助洗衣(收費)

上網電腦(免費)

兒童遊樂設施 洗衣服務

郵電服務 商務旅遊中心

貴重物品保管專櫃 美容室

室內遊樂設施 接送服務

自行車租借 行動支付

導覽解說 穆斯林餐廳

哺乳室 AED 外幣兌換

寵物友善旅宿

自行車友善旅宿

TRAFFIC INFORMATION

★ By Car

1、Take Provincial Highway 2b from Taipei through Shilin, Shipai and Beitou, turn to Dadu Road and pass Guandu, and then go through Zhuwei, Honshulin and Tamsui city to head toward the Fisherman's Wharf.

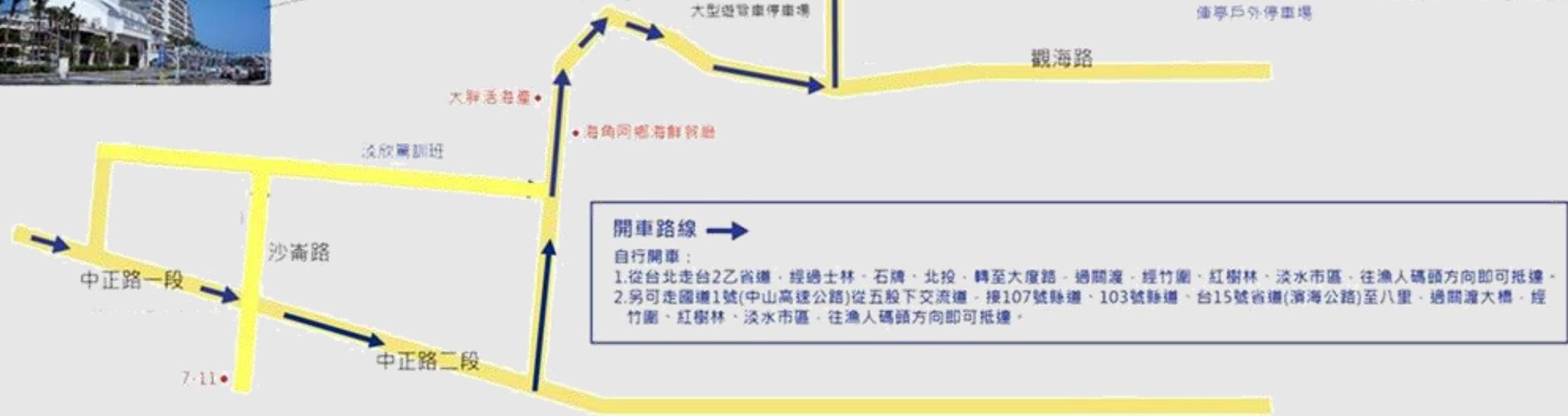
2、You can also take Freeway No.1 (Sun Yat-sen Freeway) and exit from Wugu. Then connect to County Highway 107, County Highway 103 and Provincial Highway 15 (Xibin Highway) to Bali, pass the Guandu Bridge then go through Zhuwei, Honshulin and Tamsui city to head toward the Fisherman's Wharf.

★ Metro (MRT)

Take MRT Tamsui Line to the Tamsui terminal station and transfer to the bus route "R26". Get off at the Fisherman's Wharf terminal station and our hotel is just around the corner.

TRANSPORTATION ROUTE MAP

1F



開車路線 →

自行開車：

1. 從台北走台2乙省道，經過士林、石碇、北投，轉至大度路，過關渡，經竹圍、紅樹林、淡水市區，往漁人碼頭方向即可抵達。
2. 另可走國道1號(中山高速公路)從五股下交流道，接107號縣道、103號縣道、台15號省道(濱海公路)至八里，過關渡大橋，經竹圍、紅樹林、淡水市區，往漁人碼頭方向即可抵達。

DANHAI LRT



The first domestically manufactured light rail train in the country, it is a cross-border cooperation between Taiwan Rolling Stock Corporation and the German company Voith. From design, manufacturing to testing, the entire train is completed in Taiwan.

The exterior is a streamlined design with the image of the sea. The aqua blue color of the body painting represents the clear flow of the Tamsui River, and the white color symbolizes the sunlight reflected on the water surface. The gradient at the intersection of the two is like the sparkling waves of the Tamsui River, with a hint of green interspersed at the same time. It symbolizes the reflection of Guanyin Mountain; the inside and outside of the carriage are designed in aqua blue, with large viewing windows, giving you an unobstructed view of the beautiful scenery of Tamsui.

Each light rail train is composed of 5 carriages. It is a 100% low-chassis train with light capacity and manned driving. It has a maximum operating speed of 70 kilometers per hour and can carry 265 people. It has a flat walkway between the carriages and a spacious barrier-free space. Taking into consideration the needs of all passengers.

Danhai Light Rail is the first public art railway of several meters in Taiwan. It starts from Mangrove Station and ends at Kanding Station after 11 stations. Mangrove Station is connected to the Tamsui Line MRT. The biggest highlight of Danhai Light Rail is that each station has There are Jimmy's decorative arts, plus two Jimmy's bus stops, there are a total of 13 groups of Jimmy's works that can be photographed.



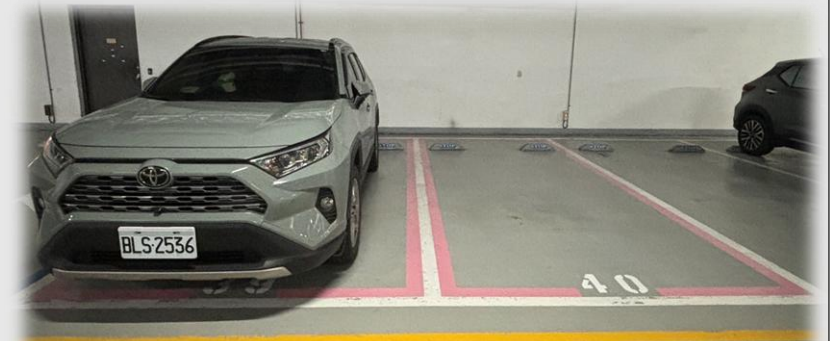
PARKING LOT

★ The hotel's own indoor parking lot is B1, with a total of one floor

- ◆ There are 110 parking spaces in total
- ◆ There are 2 love parking spaces in total
- ◆ There are 2 baby parking spaces in total
- ◆ There are 3 charging stations for electric vehicles

★ Outdoor large bus parking lot and fishing port parking lot

- ◆ Large bus parking spaces can accommodate a total of 12-13 vehicles
- ◆ The first parking lot of Tamsui Second Fishing Port, Reference fee standards:
NT\$60/time on weekdays;
NT\$90/time on holidays
(If there are any changes, no further notice will be given, and the on-site announcement shall prevail)



BUSINESS HOURS AND FLOOR MAP

淡水河

4月 營業時間表

飯店區	
阿基師觀海茶樓 餐廳 1F	田園西餐廳 2F
週一~週日 午餐 11:30~14:00 晚餐 17:30~21:00	週一~週日 早餐 07:00~10:00 晚餐 17:30~21:00 (自助餐料理)
大廳咖啡廳 1F	
週日~週五 11:00~18:00 週六 11:00~22:00	
休閒設施	
觀景情人塔 1F	休閒中心 3F 手作DIY、棋藝室、各式桌遊及運動用品
週五~週日 (每半小時一班次) 上午 10:30首班~12:00末班 下午 14:00首班~18:30末班	海景健身房 兒童遊戲室 懷舊KTV
麗。養身 lih spa 3F	週一~週日 09:00~12:00 14:00~22:00
週三~週一 (每週二加強清潔不開放)	
溫泉大眾池 3F	自行車租借 1F
週四~週二 09:00~12:00 14:00~22:00 (每週三加強清潔 16:00後閉館) (12:00~14:00 清潔時間)	週一~週日 07:00~19:00

商場區

樂活運動中心 1F	樂活初號店 1F
桌球/撞球 / 乒乓球 週一~週日 (12:00~14:00 清潔時間) 09:00~12:00 14:00~21:00	週一~週日 11:00~18:00 下午茶 / 伴手禮 / 禮儀餐材 / 宅配美食
星巴克 1F	親子體能館 1F
週一~週五 12:00~19:00 週六日 09:00~20:00	週五 13:00~14:30 / 15:00~16:30 17:00~18:30 / 19:00~20:30 (48次) 週六、日 11:00~12:30 / 13:00~14:30 15:00~16:30 / 17:00~18:30

上述設施若包含在住宿專案內，請依所訂營業時間內兌換，若無包含在專案內可單獨兌換。價格、內容、地點特別營業時間及其他未盡事宜請洽服務或詢問中心為主。春節期間另有營業時間表，請參考官網。

4月活動表

週一	週二	週三	週四	週五	週六	週日
09:00 冥想舒展運動 3F 海濱健身房 (預約)						
10:00 香氣精油手工皂手作DIY 3F 休閒中心 (預約)					阿熊車大賽 1F 飯店大堂	
11:00 氣球小達人 3F 休閒中心				淡水阿熊家族+滿天星好友見面會 1F 飯店大堂		淡水阿熊家族 / 南洋樂園 1F 飯店大堂
				15:30 南洋樂園 1F 大廳咖啡廳		
				16:00 香氣浴鹽手作DIY 3F 休閒中心 (預約)		
				19:00 星光電影院 POPA電子卡帶 3F 親子樂園	星光電影院 親子樂園 3F	星光電影院 POPA電子卡帶 親子樂園 3F
				20:00 沙龍神秘夜市 (預約) 20:00 親子樂園 1F	兒童歡樂派對 親子樂園 1F	沙龍神秘夜市 (預約) 親子樂園 1F
				21:00 阿熊家族說故事 3F 兒童遊戲室	南洋樂園 1F 大廳咖啡廳	阿熊家族說故事 3F 兒童遊戲室

- 「淡水阿熊勇闖歡樂島」週五 13:30、15:30、17:30、19:30 及週六、日 11:30、13:30、15:30、17:30，舉辦「阿熊家族歡樂說故事活動」。
- 「各式桌遊及運動用品租借至房內使用」(退房前歸還)每日時間：09:00~22:00。<3F休閒中心>
- 「冥想舒展運動」住宿期間房費免費，請提早一天預約。<3F海濱健身房>
- 「沙龍神秘夜市」週五、日 去程 20:00 回程 21:00。<1F 親子樂園> 預約分機 # 8252

詳情請參考官網 活動報名分機 8125

為維持活動品質，上述戶外活動為付費或持專業兌換券參加，報名額滿為止，且本飯店將視天氣狀況現場公告是否取消，並保留變更及最後修改權利，實際行動依現場公告為主。

飯店1~3F 樓層導覽圖 Hotel Level Guide

館外1F：阿基師觀海茶樓 / 情人塔 1F：大廳咖啡廳 / 樂活初號店 / 樂活運動中心 / 親子館

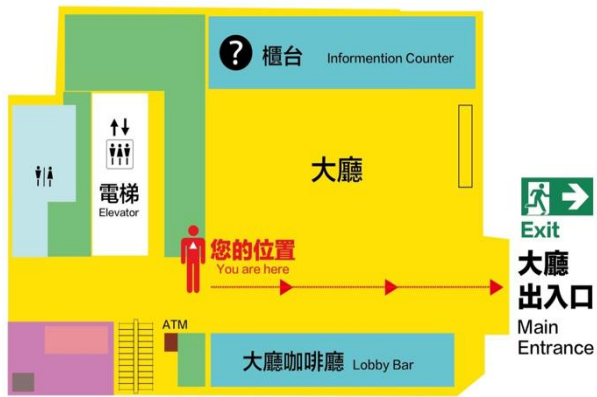
2F：田園咖啡廳 早餐 (每日) / 百匯料理 (週五、六、日 晚餐)

3F：休閒設施 / 溫泉泡湯 / SPA / 戶外泳池 (夏季開放)

HOTEL EMERGENCY ESCAPE ROUTE GUIDE MAP

1F 緊急逃生路線圖

1F Evacuation plan



您的位置 You are here

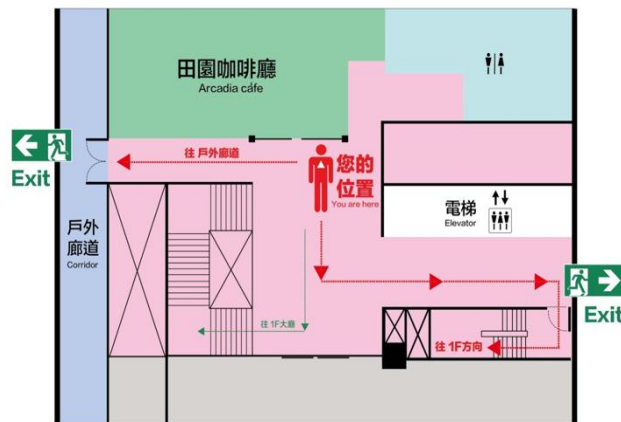
緊急出口 Exit

緊急逃生路線圖 Evacuation plan

歡迎 WELCOME

2F 緊急逃生路線圖

2F Evacuation plan



您的位置 You are here

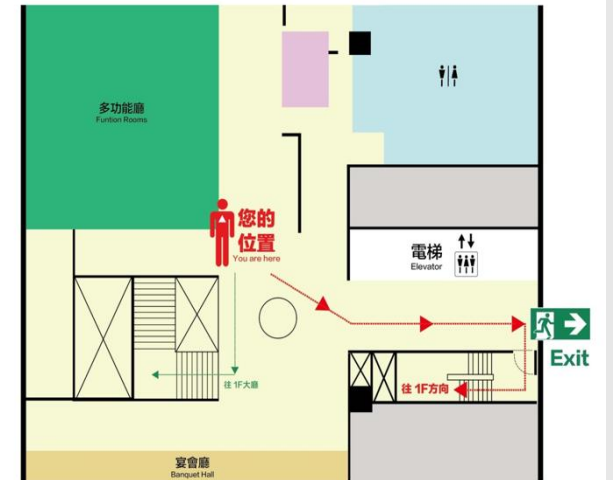
緊急出口 Exit

緊急逃生路線圖 Evacuation plan

歡迎 WELCOME

3F 緊急逃生路線圖

3F Evacuation plan



您的位置 You are here

緊急出口 Exit

緊急逃生路線圖 Evacuation plan

歡迎 WELCOME

HOTEL AUTOMATED EXTERNAL DEFIBRILLATOR(AED)



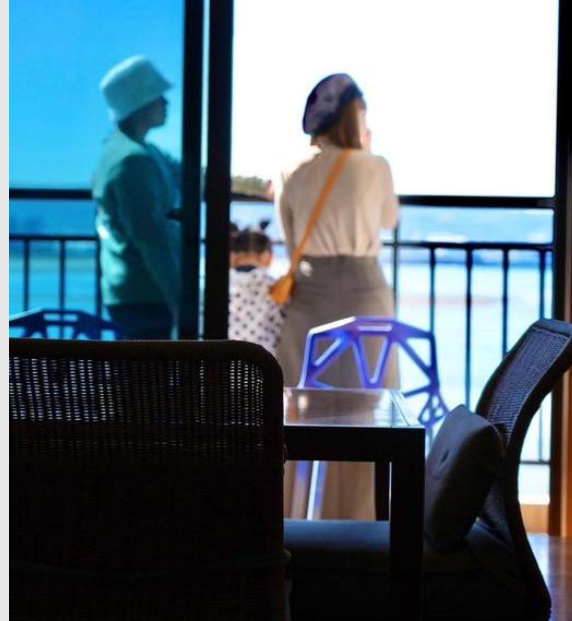
一座位於1F大廳
*One is located in the lobby on
the first floor*



一座位於三3F休閒(鄰近泳池)
*One is located in the leisure area on the
third floor(near the swimming pool)*

ACCOMMODATION RELATE

The hotel looks like a giant cruise ship and has a romantic reputation as the "Love Ship". Marine leisure and resort style can be seen everywhere, providing extremely considerate and distinguished services. Looking out from the hotel room, we are facing the wide estuary of Tamsui River. Looking outside, you will see the vast and unobstructed view of the harbor and the seven-star beautiful sunset, which will immediately release the stress in daily life. The balcony in the room allows you to enjoy the sea breeze and view the scenery from a high position, which is very pleasant. The hotel has SPA, swimming pool, gym and other entertainment facilities. There are shopping streets and art streets outside the hotel, providing travelers with a place to rest and shop, satisfying you all at once. It is close to Tamsui Old Street, Hongmao City, and Tamkang Middle School, where the movie was shot, enriching your leisurely trip to Tamsui.



DELUXE CITYVIEW DOUBLE TWIN B

Room pricing :

NT\$ 11,800+10% (without bathtub) / 25 rooms

NT\$ 12,800+10% (with bathtub) / 20 rooms

Indoor square footage : 13.5 square meters ;

balcony square footage : 1.5 square meters

Number of guests : 2-4 people

Bed type information : Two double beds 180*200cm

Room equipment :

Electronic card door locks, LCD TV,
central air conditioning, Flush toilet, DVD player,
broadband Internet access, refrigerator, hair dryer,
Electric hot water bottle, special safe, iron,
Ironing board, satellite television channels,
direct dial telephone, Separate wet and dry shower,
110V and 220V sockets



Accommodation

電話： (02) 2805-9958 #8294
傳真： (02) 2805-2126
e-mail： 代理窗口： 黃心玫/黃郁雅
活動期間： 2024/5/25 (六) ~ 2024/5/26 (日) 活動人數:位 電話： (02) 2805-9958 #8275 #8188

報價日期： 2024/4/8

Hello, thank you for your company's support for Fullon Hotel. Regarding your company's arrangement of group housing, we would like to provide the quotation and relevant content as follows. If you have any questions, please don't hesitate to call us for help. **This preferential quotation is only provided to your company for its own hosting. If it is hosted through other channels, this preferential quotation will not be applicable.**

(一) Accommodation related :

Same price for single and double occupancy

Date	Room Type	Bed Type	price	Preferential price	number of rooms	Number of people	R/N	Expense
	Deluxe Cityview Double Twin B (Shower room)	180*200*2	\$11,800+10%	\$4,500	0Rooms	2 Per person	1Night	\$ -
	Deluxe Sea View Double Twin B (Shower room)	180*200*2	\$14,800+10%	\$5,500	0Rooms	2 Per person	1Night	\$ -